



SCENERY ON A BUDGET

How to save time and money

DREW POSEY

- ❑ Technical Theatre instructor at Pulaski Academy
- ❑ Technical Director at Arkansas Arts Center Children's Theatre
- ❑ Technical Director at The Foundation of Arts Forum Theatre
- ❑ Master Carpenter at The Arkansas Repertory Theatre
- ❑ BA in Theatrical Design from Arkansas State University



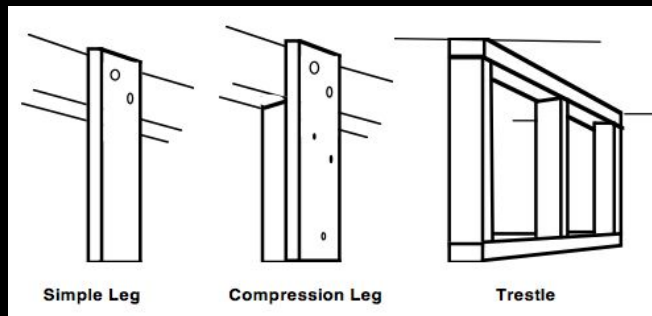
WAYS TO SAVE TIME AND MONEY

- ❑ Maintain a stock of platforms and flats
- ❑ Maintain a stock of paints and paint tools
- ❑ Invest in hardware that will last
- ❑ Maintain a stock of props and furniture



PLATFORMS

- ❑ Keep some stock platforms if you can
 - ❑ 4x8 are standard
 - ❑ Triangles are handy
 - ❑ Trap doors are great effects
 - ❑ Keep a stock of legs and clamps



FLATS

- ❑ 4x8 Studio or Standard Flats
- ❑ Hard flats store better
- ❑ Return flats
- ❑ Window and door flats made from smaller flats
- ❑ Do not use glitter or glue on face

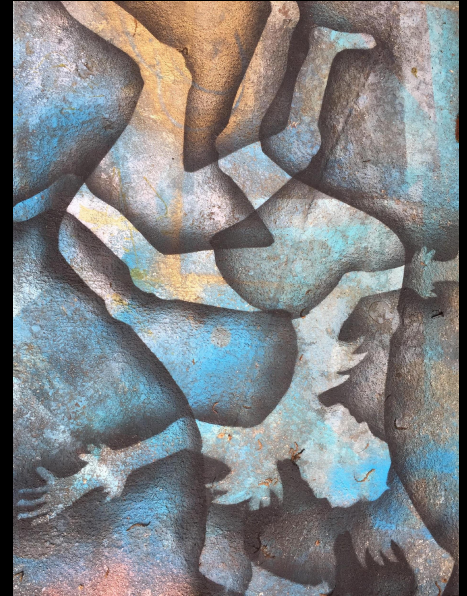


PAINT AND HARDWARE MAINTENANCE



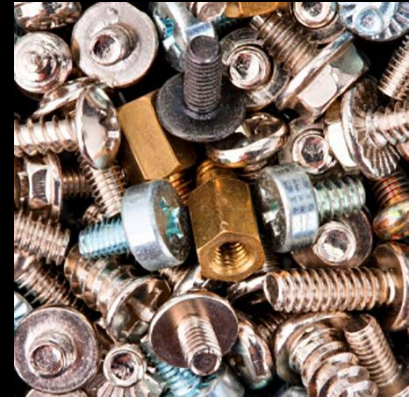
MAKE PAINT LAST, SAVE EVERY DROP

- ❑ Prepare can to hold paint longer
- ❑ Don't paint straight from bucket
- ❑ Pour leftover paints into slop buckets, use as primer
- ❑ Clean all paint tools thoroughly
- ❑ Buy used paints at Re-sell stores – Habitat for Humanity



INVEST IN HARDWARE, KEEP IT ORGANIZED

- ❑ Buy hardware that can be reused
- ❑ Hinges are versatile - use as screwplates, angle irons, hanging hardware, etc
- ❑ Buy in bulk when you can
- ❑ Find what works for you and stay consistent



PROPS

The Amazon logo, featuring the word "amazon" in a bold, black, sans-serif font. A curved orange arrow is positioned below the letters "a" and "z", pointing from the "a" to the "z". A small registered trademark symbol (®) is located to the upper right of the "n".

amazon®

Amazon Prime

Fast and affordable - Great for last minute needs. Set up wish lists!

The Oriental Trading logo, featuring the words "Oriental" and "Trading" in a bold, blue, sans-serif font. The text is slanted upwards to the right. A small registered trademark symbol (®) is located to the upper right of the "g".

Oriental
Trading®

Party Supply Stores

Create atmosphere and dress the house for low cost.

The Stylize logo, featuring the word "Stylize" in a bold, black, sans-serif font. The text is centered between two rows of pink, rounded rectangular shapes that resemble buttons or dots.

Stylize

Props can be odd

Treat all props in a production in a stylized fashion to create a unique experience



ORGANIZE YOUR VISION

PINTEREST

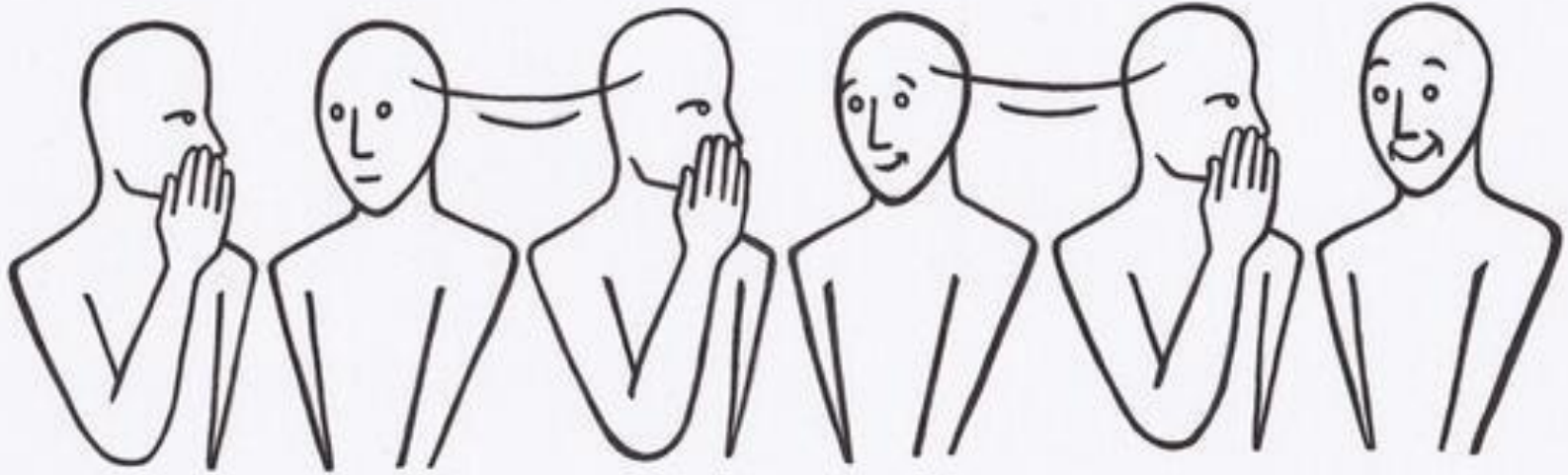


Build a board with all your ideas
Create different boards for each aspect
Share with students and volunteers

GOOGLE DRIVE



Save all images and docs in one place
Easily access from anywhere
Share with everyone



COMMUNICATE IDEAS WITH EVERYONE INVOLVED

Don't play the telephone game. Make sure everyone who works on the project understands their role and sees the big picture.

VISUALIZE IDEAS



SKETCHES

Draw out your plan to the best of your abilities or get help from a student who wants to develop their skills.



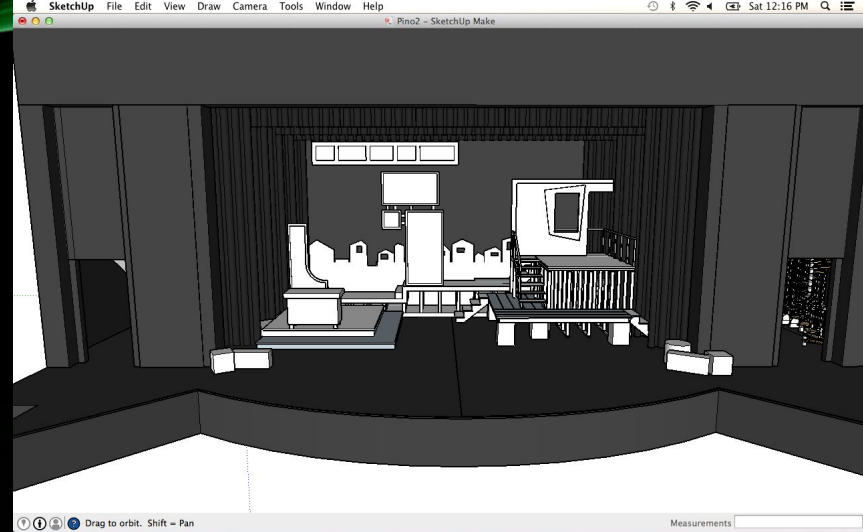
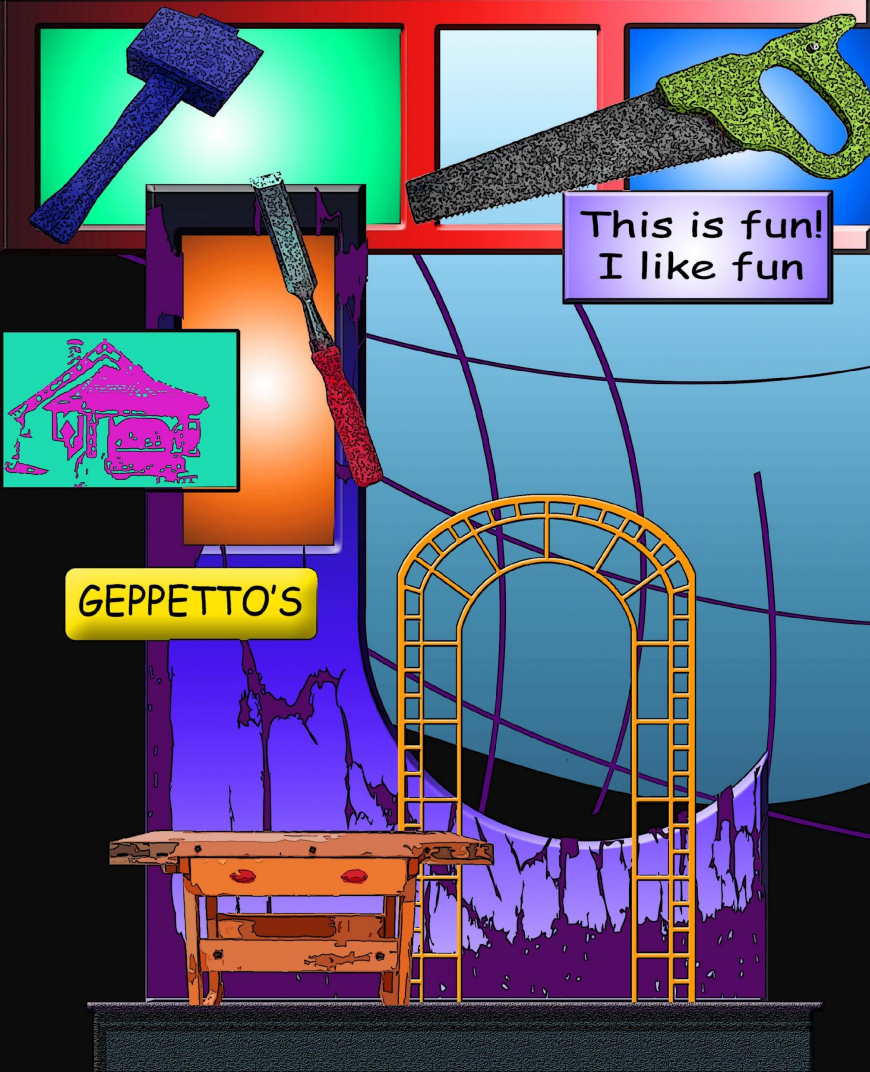
COLLAGES

Patterned paper, water colors, stickers and stencils all make for great collage materials. Creating an image in 2.5 D may help express your ideas.



MODELS

Models can be physical objects or computer rendered. Experiment to find out how to best express yourself.





STEAL LIKE AN ARTIST

- “Art is theft.” – Pablo Picasso
- “The only art I’ll ever study is the stuff that I can steal from.” – David Bowie
- “Half our pleasure in seeing a play lies in our knowledge that we are in the presence of artists.” – Robert Edmond Jones
- It is important to maintain a healthy diet of art and design. Learn what you can by allowing yourself to be influenced by what fascinates you.

BUILDING A SET

- ❑ Use consistent building methods
- ❑ Use consistent building materials
- ❑ Design with material dimension in mind
- ❑ Invest in stock/reuse materials
- ❑ Measure twice, cut once



CONSISTENT BUILDING METHODS



Platforms

Frame with #2 white pine (spruce),
untreated 2x4's. I buy 12' sticks

Deck with $\frac{3}{4}$ " BC or sanded
plywood.

3" #8 screws for frame

1.5" #8 screws for deck



Flats

Frame with 1x2 $\frac{1}{2}$ " #2 white pine,
ripped down from 1x12x12's

Skin $\frac{1}{4}$ " lauan

Frame glued and nailed 1.5"

Skin glued and bradded $\frac{3}{4}$ "



Stairs

8/10 rise over run

30" minimum width

Plywood construction

Leg when installing

DESIGN IDEAS

Use light to set the scene



CHEAP SPECIAL EFFECTS



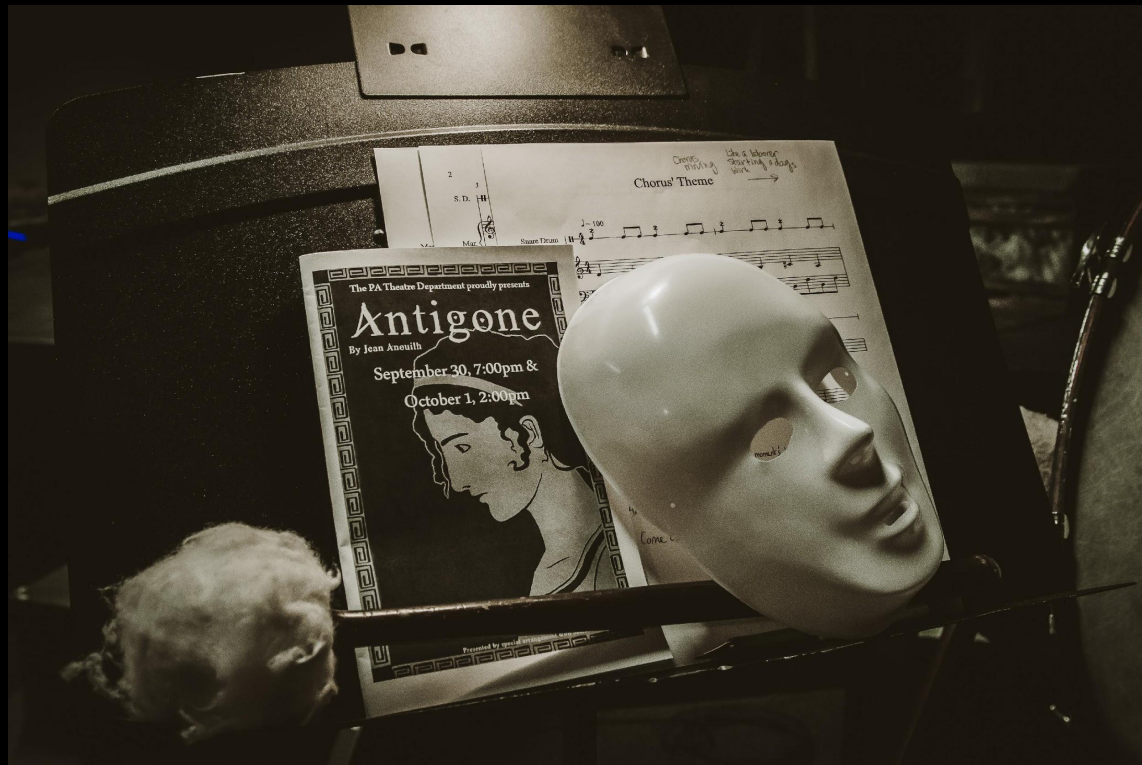
TEXTURE/COLLAGAGE



FABRIC CADABRA



SOUND CREATES ILLUSION



MONEY DOESN'T MAKE **YOUR** WORLD GO ROUND



\$10,000



\$200

WHAT MAKES A SUCCESSFUL DESIGN?



Creativity

Solve problems with simple solutions and let the audience's imagination accept the reality you create.



Intention

Make a statement with simple forms. The pictures you create with actors can be more impactful than a realistic set.



Harmony

All pieces have to fit in the world you are presenting. Work with what you have but also make what you have work for you. Transitions are key for a successful production.



FLUID TRANSITIONS GROUND YOUR REALITY

THINK OUTSIDE THE BOX

